



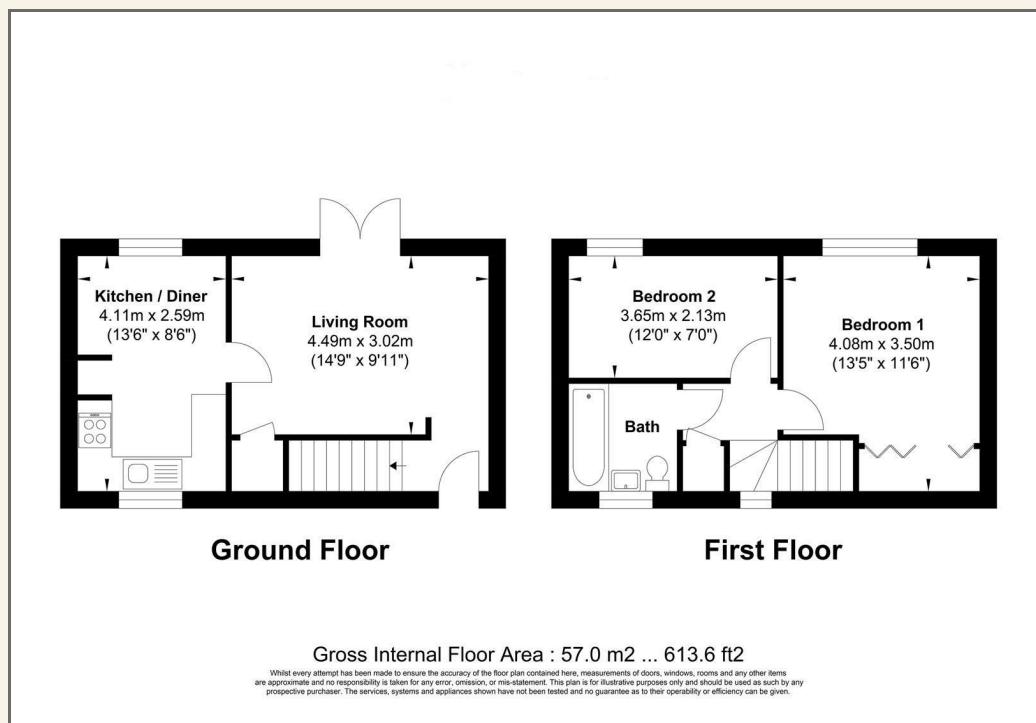


ASHTON  WHITE
Leading the way home

21 Brandon Close, Billericay, CM12 0YY
£1,700 Per Month

 2  1  1  C

A delightful two bedroom end-of-terrace house pleasantly located in arguable the most popular area of Queens Park, available from the middle of March. Constructed in the 1980's, this well-presented home has been much improved over recent years. Upon entering the property there are staircase to first floor and doorway to living room with pleasant views via French doors over the larger than average garden. There is a modern fitted kitchen/dining room with integrated appliances. To the first floor landing, doors lead to two decent size bedrooms, the larger at the front incorporating a generous built-in double wardrobe. To the side is ample off road parking and to the rear is a larger than average garden with a patio area and astro-turf lawn.



VIEWING: Strictly by prior arrangement with Ashton White Estate Agents.

THESE PARTICULARS DO NOT CONSTITUTE ANY OFFER OF CONTRACT EITHER DIRECT OR COLLATERAL NOR ARE THEY TO BE ACTED UPON AS REPRESENTATIONS. ALL INTERESTED PARTIES MUST THEMSELVES VERIFY THE ACCURACY OF THESE PARTICULARS.



- WELL PRESENTED END TERRACE HOUSE
- MODERN FITTED KITCHEN/DINING ROOM
- BEDROOM ONE WITH BUILT-IN WARDROBES
- MODERN FITTED BATHROOM
- AMPLE PARKING
- SPACIOUS LOUNGE WITH FRENCH DOORS TO GARDEN
- BUILT-IN KITCHEN APPLIANCES
- SPACIOUS SECOND BEDROOM
- NEUTRAL DECOR
- LARGER THAN AVERAGE GARDEN



**140 High Street
Billericay
Essex
CM12 9DF
01277 659002
admin@ashtonwhite.co.uk
<https://www.ashtonwhite.co.uk>**